

# MaxFlow

## Laboratory Configured Foam Generator

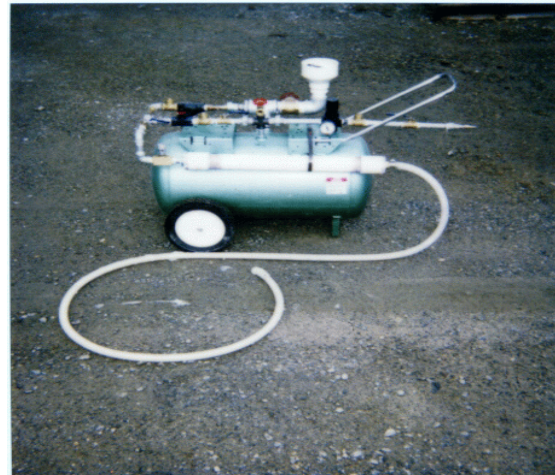
This Laboratory Configured Foam Generator is specifically designed for use of **MaxFlow Foaming Agent** and is intended for research applications. This unit has a foam solution tank capacity of (15) gallons that can be used to produce as much as (36) ft.<sup>3</sup> of preformed foam. This device comes fully equipped, requiring only a source of compressed air. The connection of the air source is made by using a standard ¼ inch industrial air fitting. Your compressed air source should be capable of supplying 7 ft<sup>3</sup>/min. at 85 psi.

**MaxFlow Foaming Agent** is manufactured and supplied as a concentrated liquid. For most applications, the concentrate is diluted at a rate of (40) parts water to (1) part **MaxFlow Foaming Agent**. The diluted foam solution is charged into the foam generator. Thereafter, the function of the foam generator is to blend predetermined portions of air and foam solution together as they are being forced through a specially designed expansion device. A resulting stable aerosol foam is produced having a controllable density range of from 3.0 to 3.5 pcf. The approximate preformed foam output rate for this unit is (.10) ft.<sup>3</sup>/sec.

**MaxFlow** preformed foam is added as the final component during the mixing of a pre-proportioned cementitious mixture. The resulting low-density material is termed cellular concrete as defined by ACI 116. For proportioning guidance and additional product information please contact:

### MaxFlow Environmental Corporation

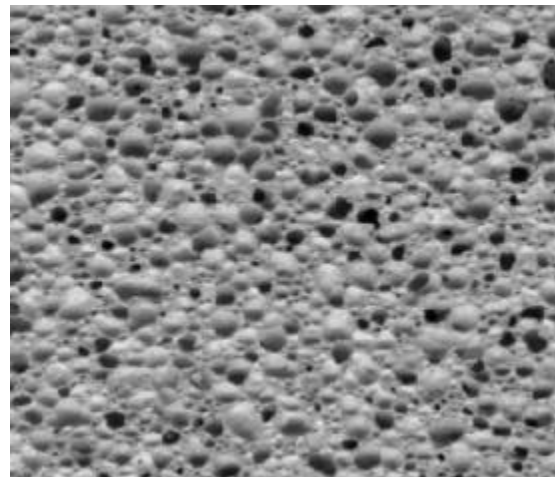
775 US Hwy 70 West  
Black Mountain, North Carolina 28711  
(828) 669-4875  
(828) 669-4874 Fax  
[www.maxflow.com](http://www.maxflow.com)  
[wmacdonald@maxflow.com](mailto:wmacdonald@maxflow.com)



MaxFlow Lab Foam Generator



MaxFlow Preformed Foam



MaxFlow Cellular Concrete